

Phylogenetic analysis of influenza A(H3N2) HA genes

22/23, 23/24 vaccine strain in Japan

FRA reference strain

April 2023

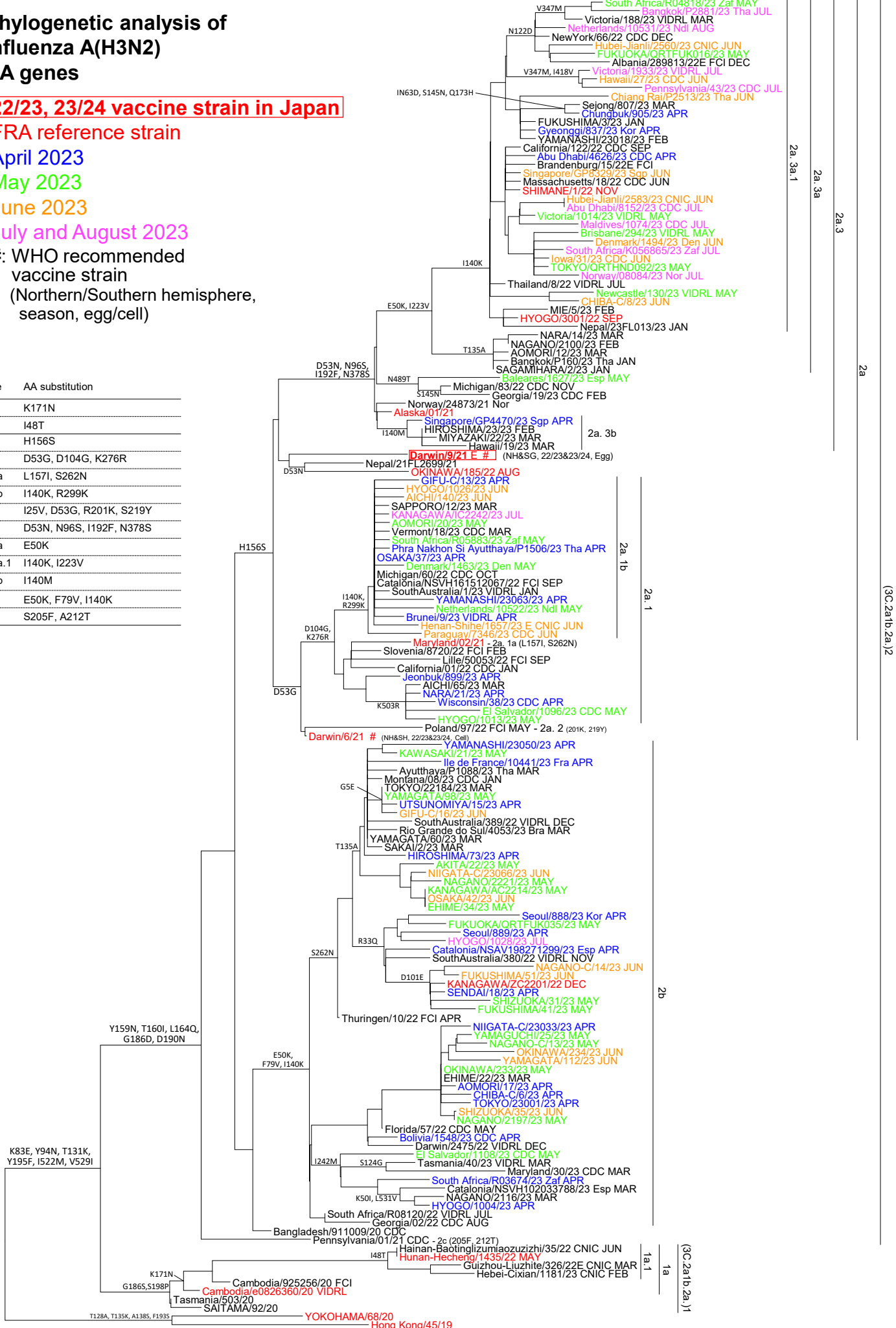
May 2023

June 2023

July and August 2023

#: WHO recommended vaccine strain (Northern/Southern hemisphere, season, egg/cell)

clade	AA substitution
1a	K171N
1a.1	I48T
2a	H156S
2a.1	D53G, D104G, K276R
2a.1a	L157I, S262N
2a.1b	I140K, R299K
2a.2	I25V, D53G, R201K, S219Y
2a.3	D53N, N96S, I192F, N378S
2a.3a	E50K
2a.3a.1	I140K, I223V
2a.3b	I140M
2b	E50K, F79V, I140K
2c	S205F, A212T



(3C.2a1b.2a.1.2)

(3C.2a1b.2a.1)