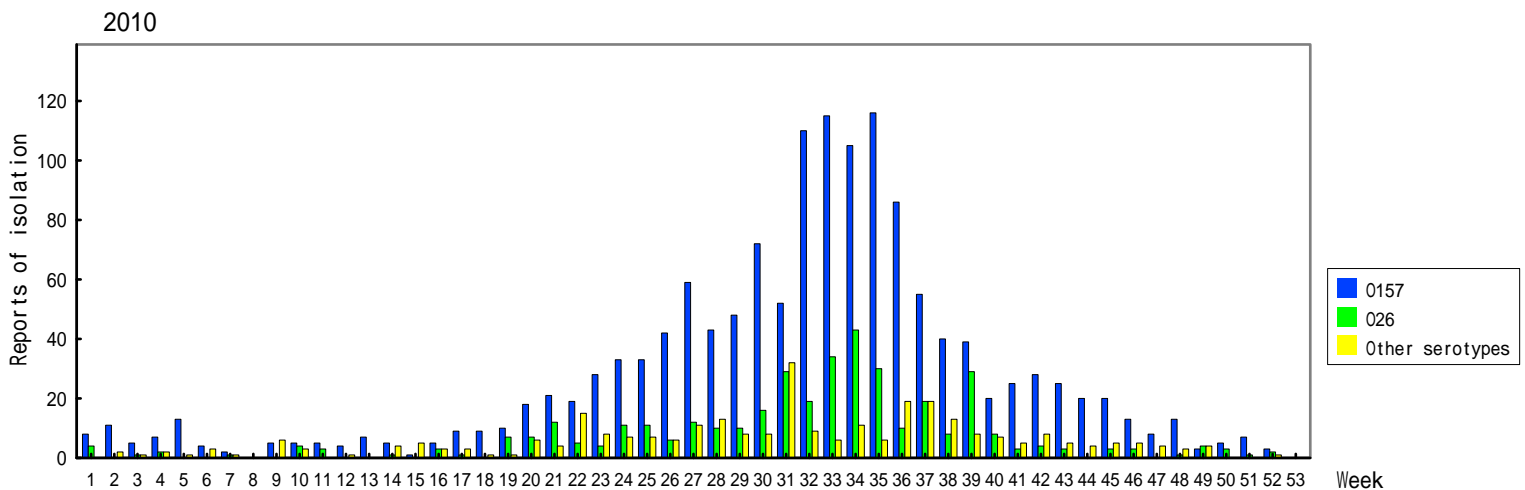
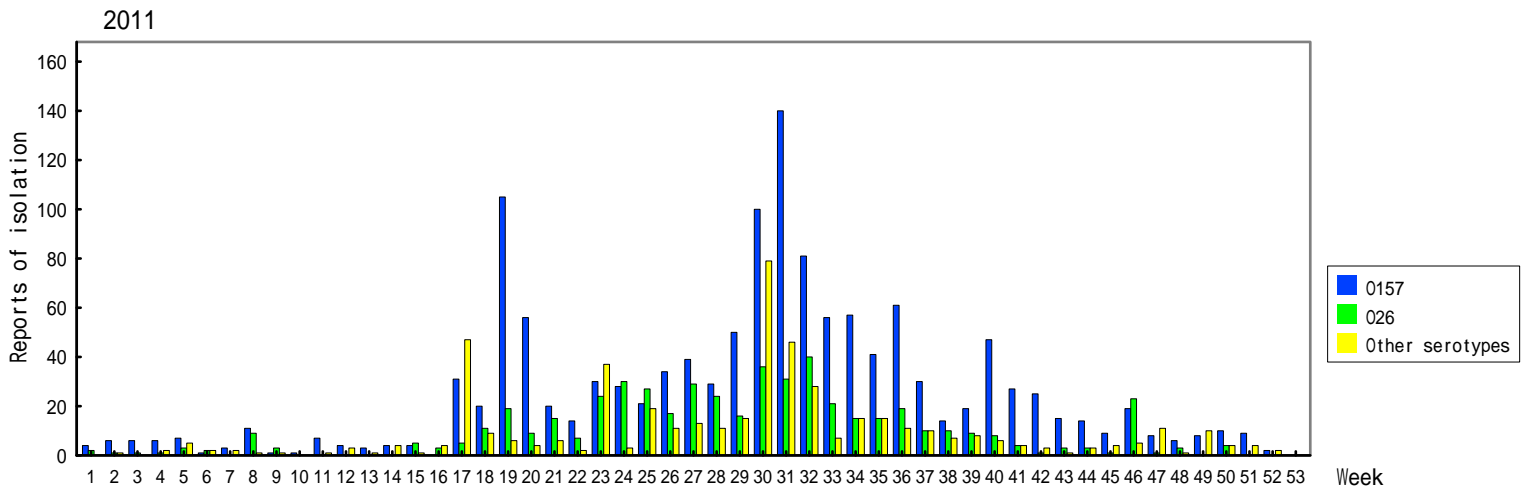
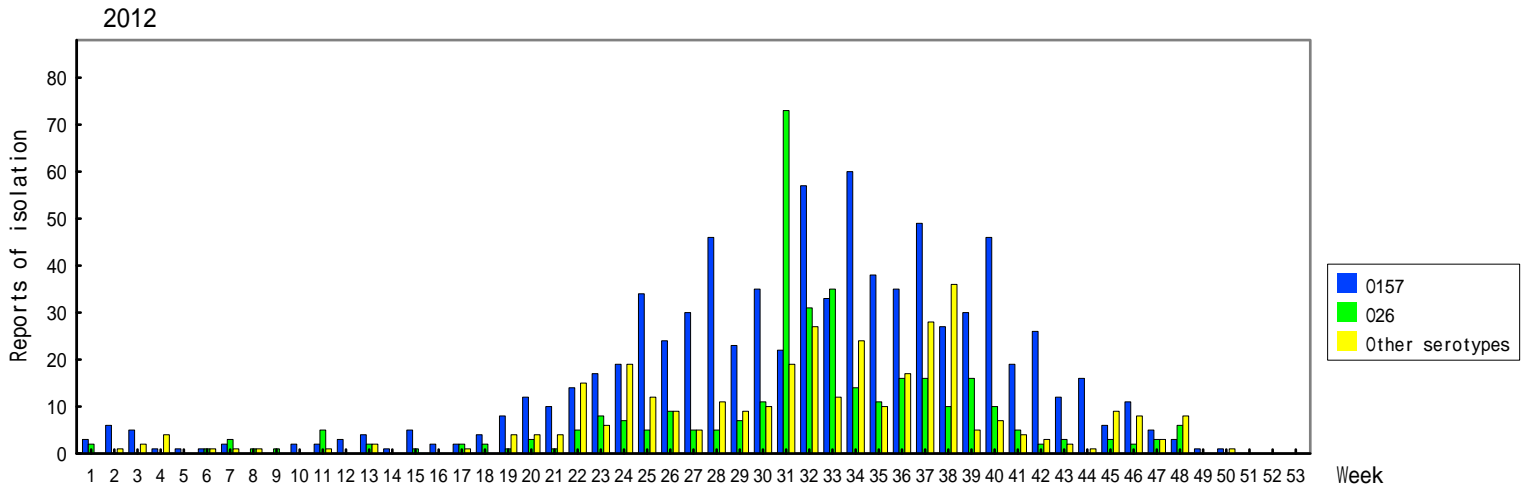


Weekly reports of VTEC isolation, 2008 - 2012

(Infectious Agents Surveillance Report: Data based on the reports received before December 29, 2012 from public health institutes)



Infectious Agents Surveillance Report



Weekly reports of VTEC isolation, 2008 - 2012

(Infectious Agents Surveillance Report: Data based on the reports received before December 29, 2012 from public health institutes)



Infectious Agents Surveillance Report

