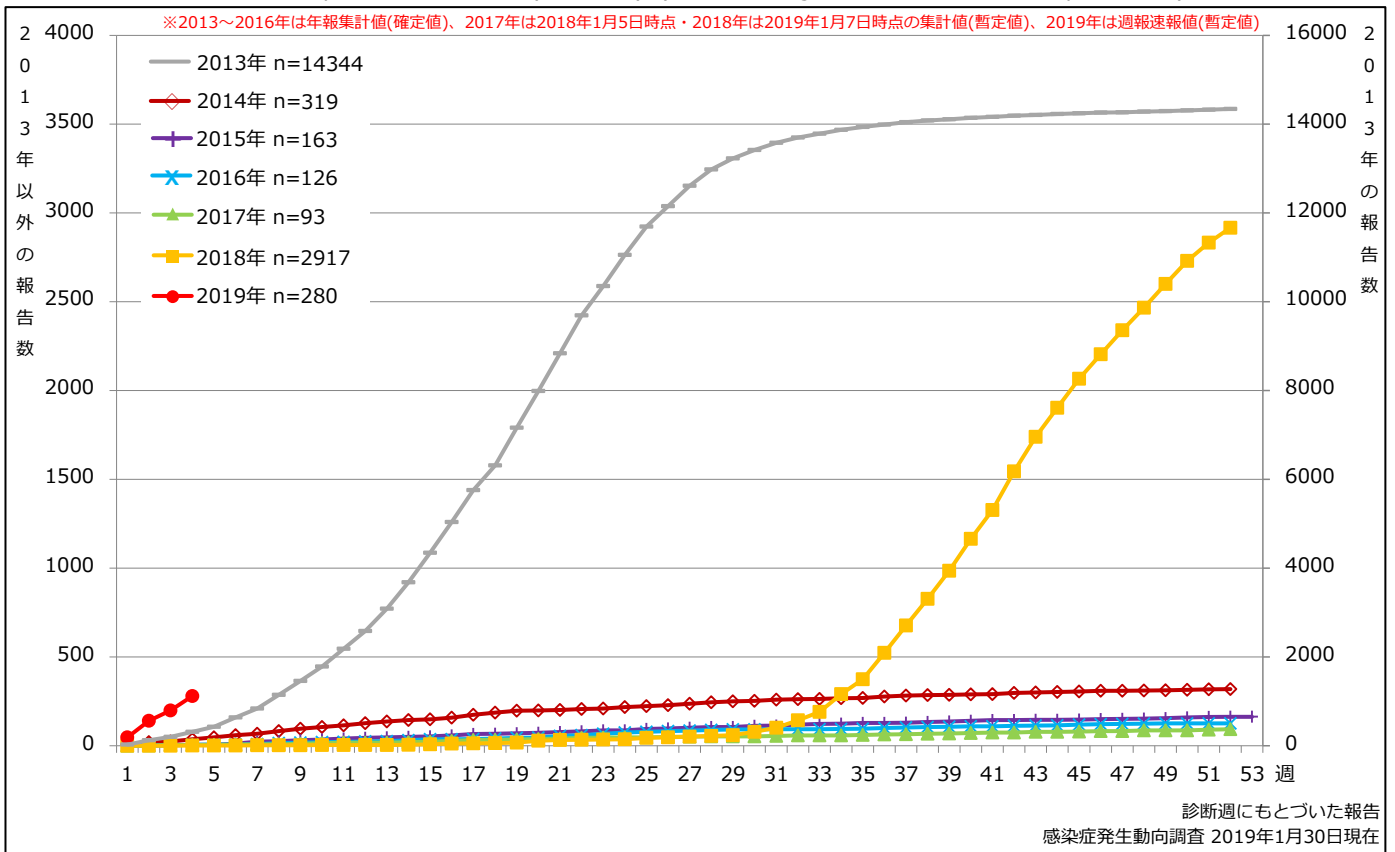


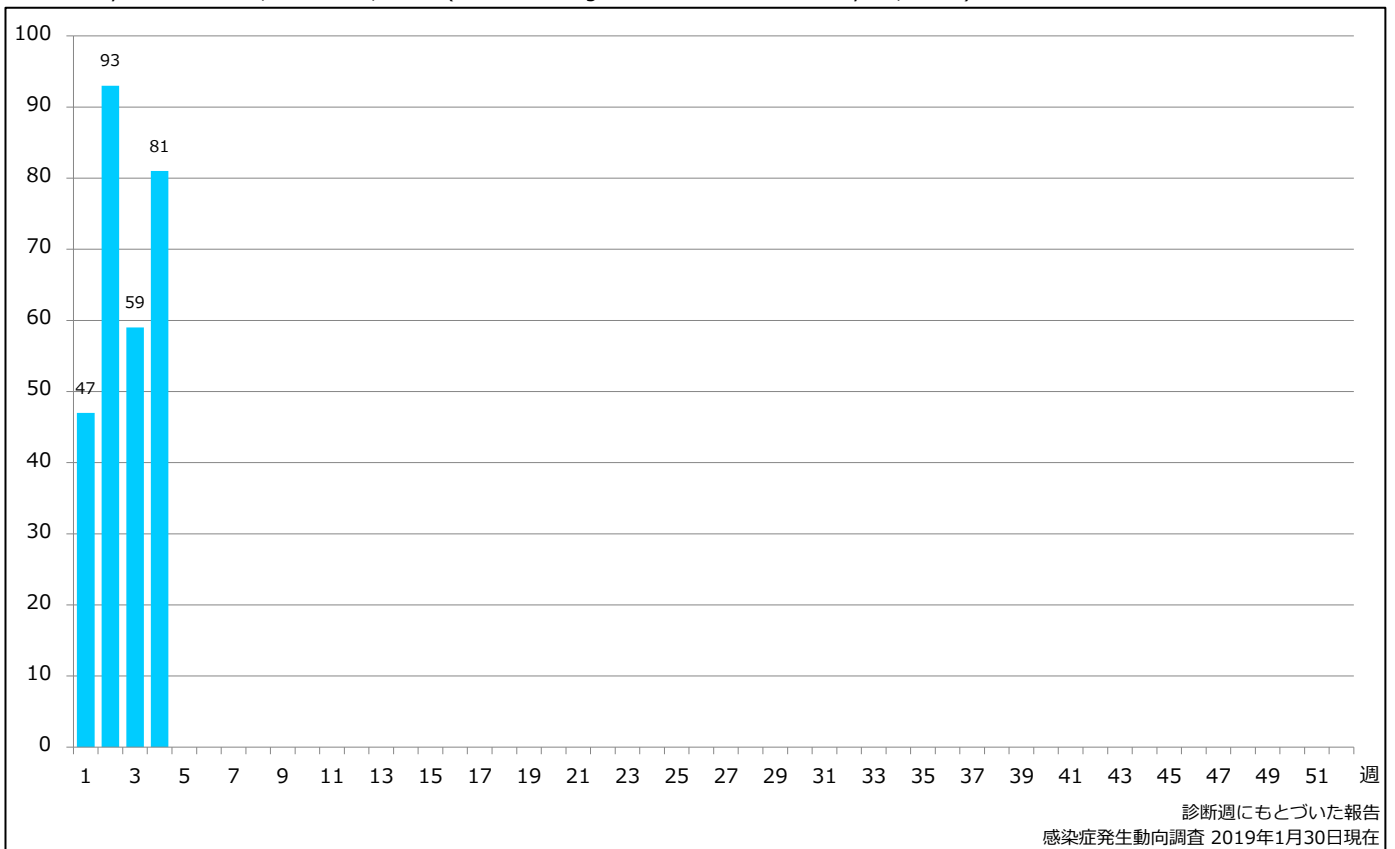
1. 風しん累積報告数の推移 2013～2019年 (第1～4週)

Cumulative rubella cases by week, 2013-2019 (week 1-4) (based on diagnosed week as of January 30, 2019)



2. 週別風しん報告数 2019年 第1～4週 (n=280)

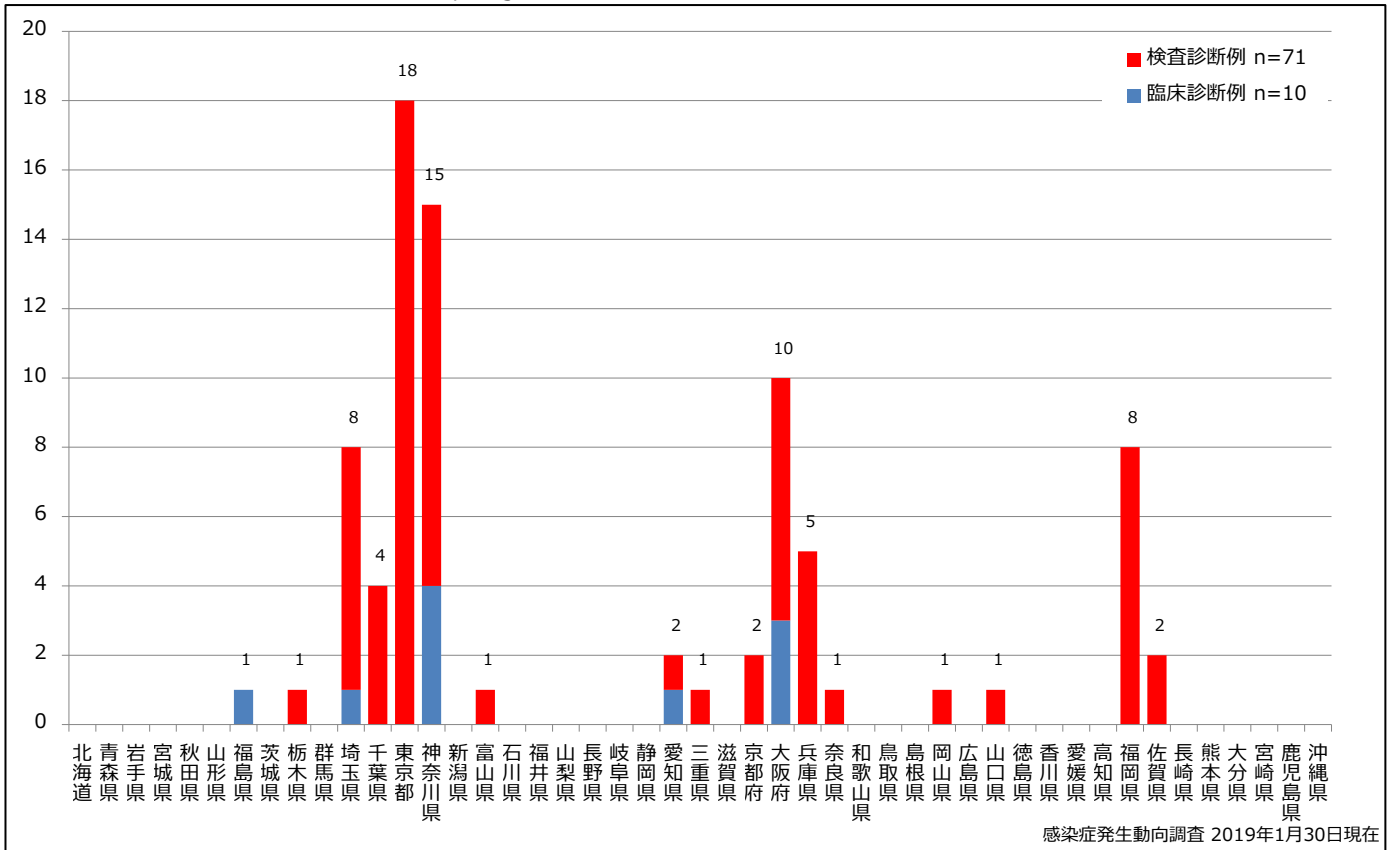
Weekly rubella cases, week 1-4, 2019 (based on diagnosed week as of January 30, 2019)



3. 都道府県別病型別風しん報告数 2019年 第4週 (n=81)

Reported rubella cases by prefecture and methods of diagnosis in week 4, 2019 (as of January 30, 2019)

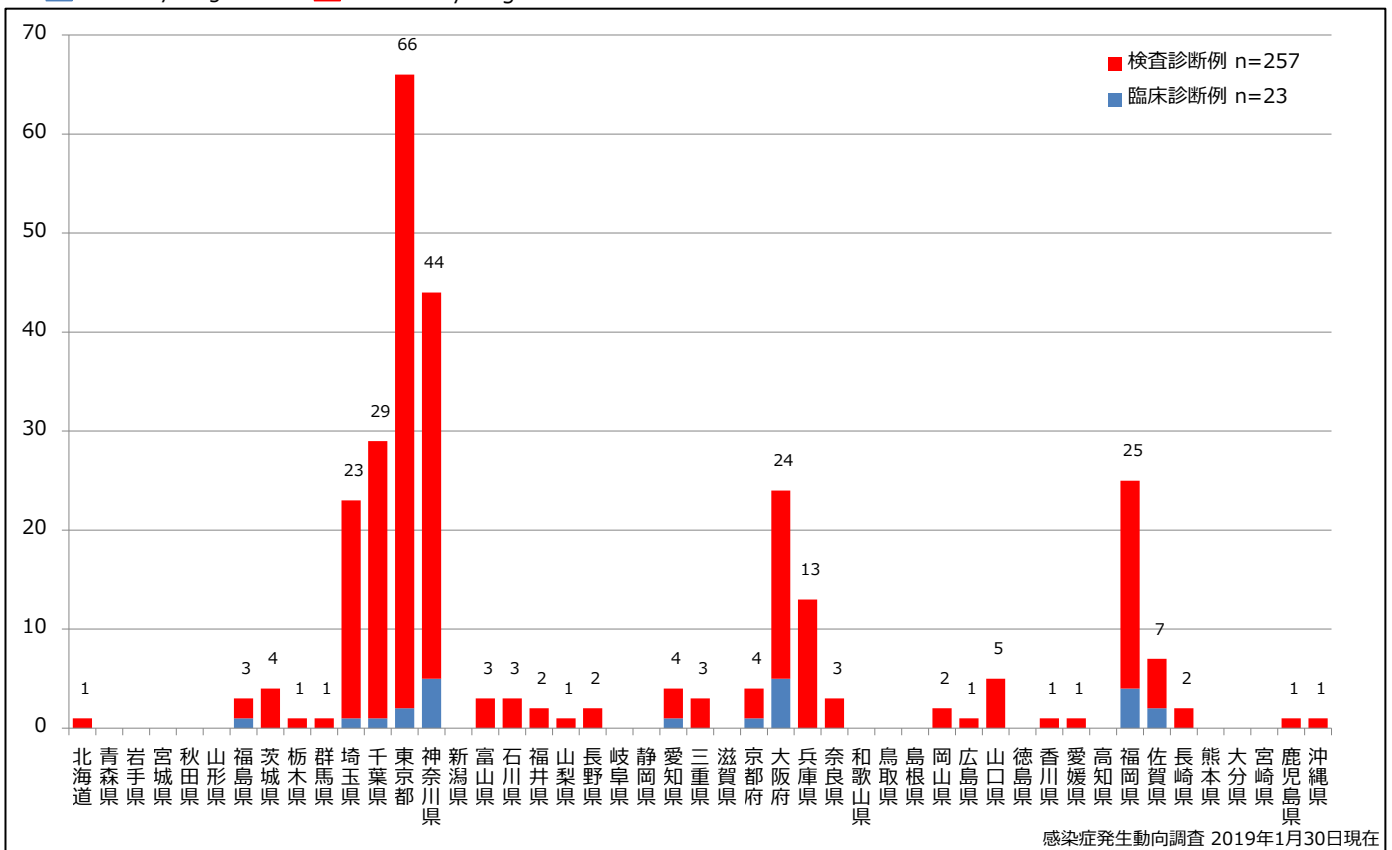
■ Clinically diagnosed ■ Laboratory diagnosed



4. 都道府県別病型別風しん累積報告数 2019年 第1~4週 (n=280)

Cumulative rubella cases by prefecture and methods of diagnosis, week 1-4, 2019 (as of January 30, 2019)

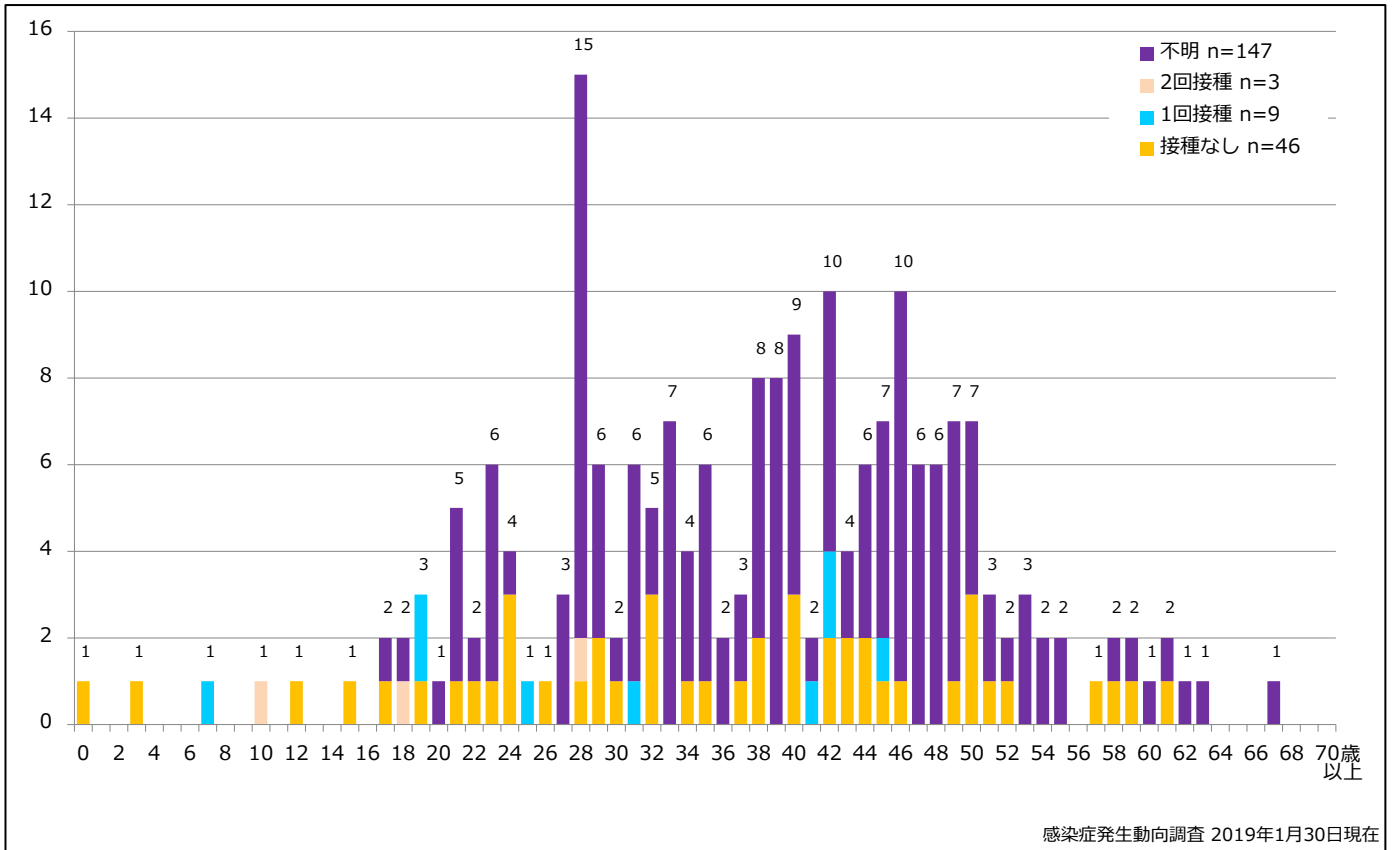
■ Clinically diagnosed ■ Laboratory diagnosed



5-1. 年齢群別接種歴別風しん累積報告数 (男性) 2019年 第1~4週 (n=205)

Cumulative rubella cases (male) by age and vaccinated status, week 1-4, 2019 (as of January 30, 2019)

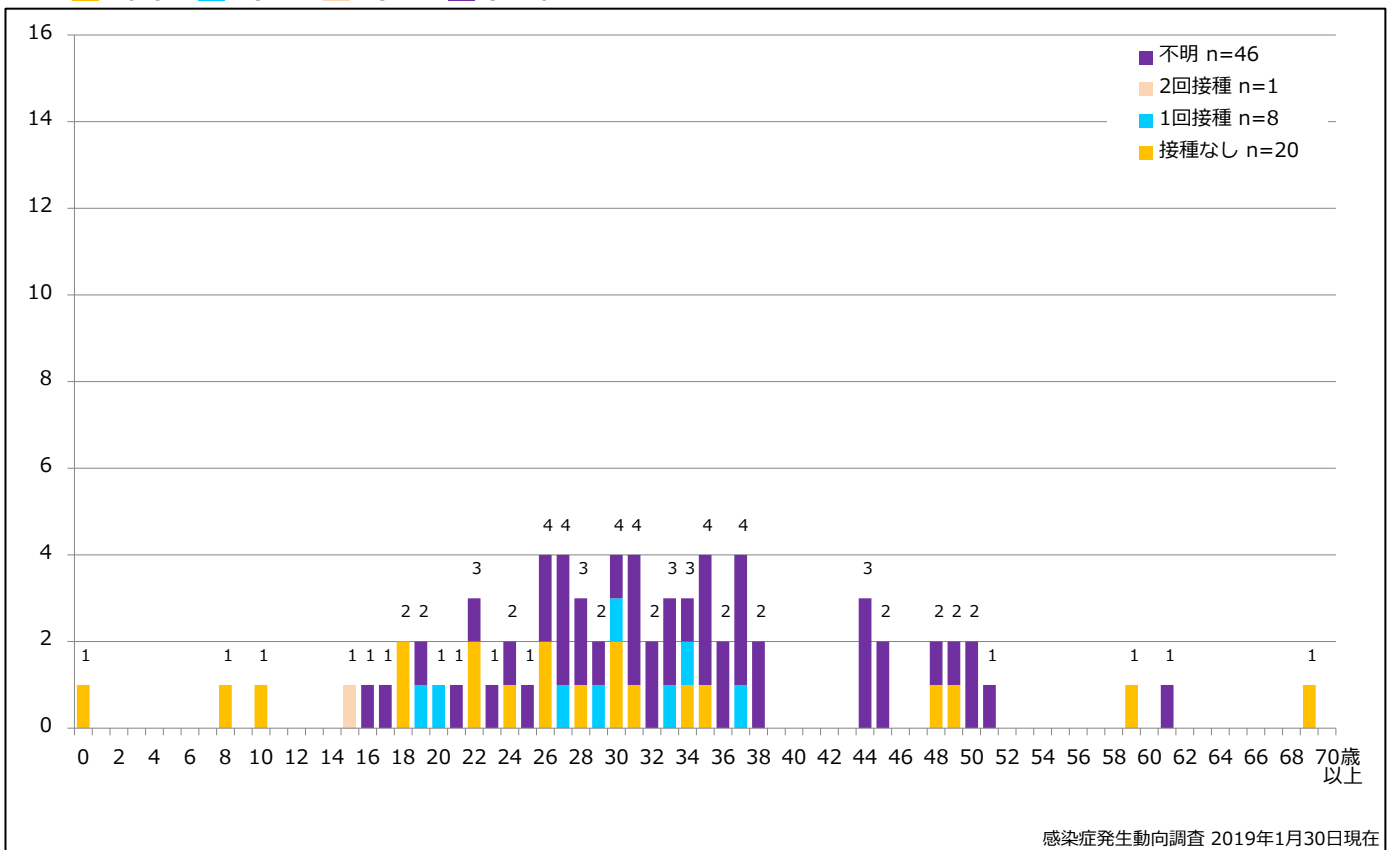
None RCV1 RCV2 Unknown



5-2. 年齢群別接種歴別風しん累積報告数 (女性) 2019年 第1~4週 (n=75)

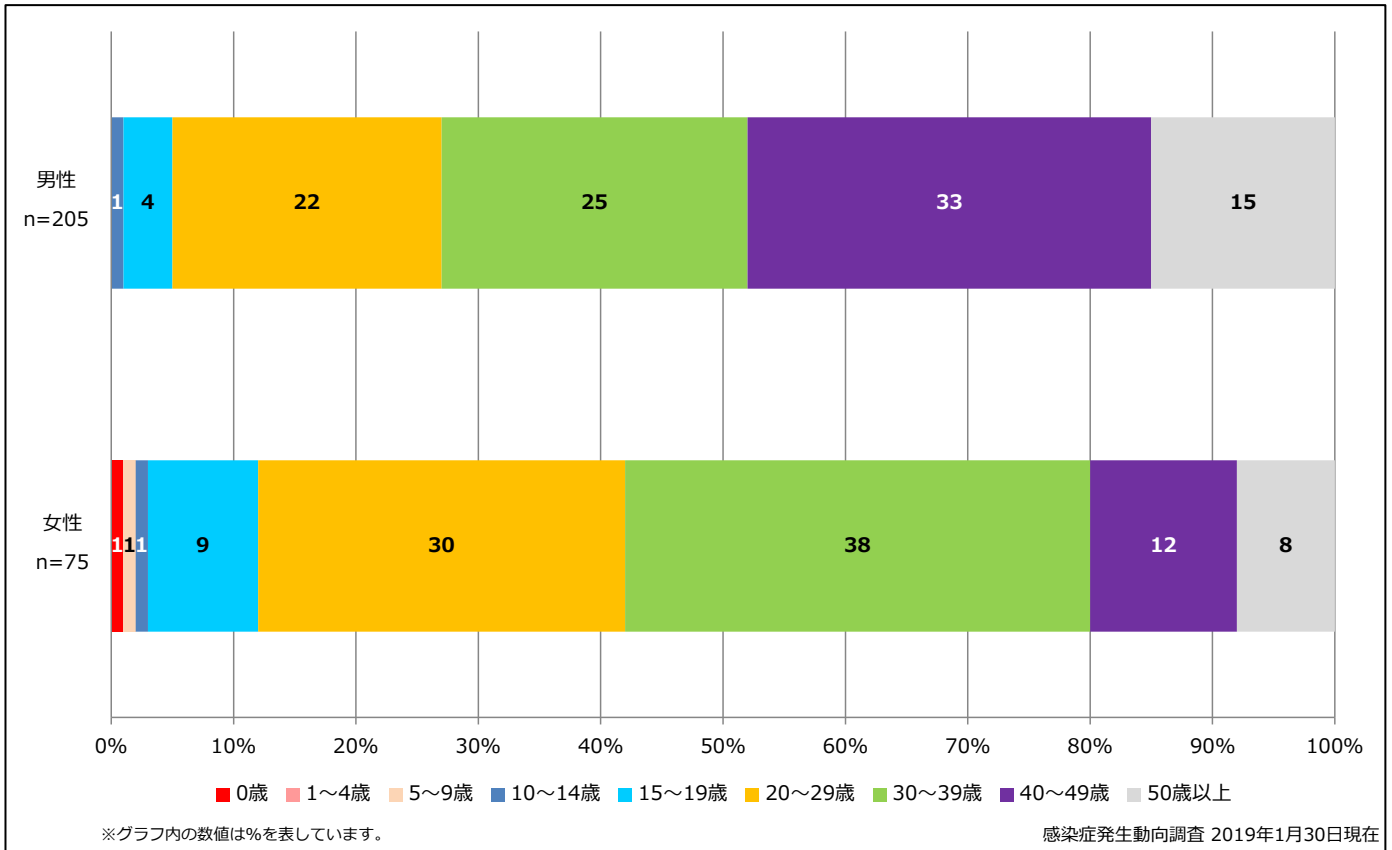
Cumulative rubella cases (female) by age and vaccinated status, week 1-4, 2019 (as of January 30, 2019)

None RCV1 RCV2 Unknown



6. 年齢群別風しん累積報告数割合 (男女別) 2019年 第1~4週 (n=280)

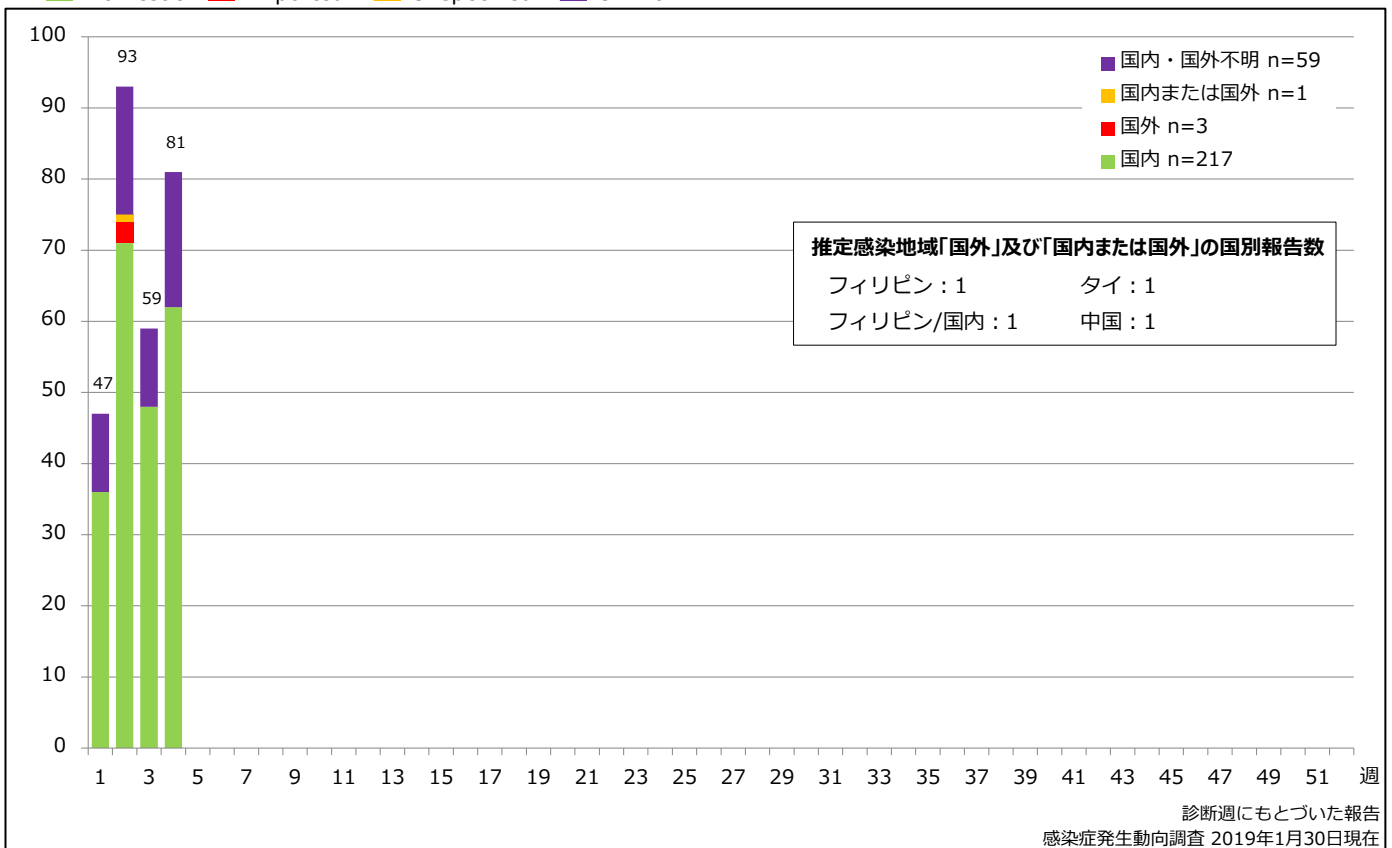
Percentage of cumulative rubella cases (upper: male, bottom: female) by age group, week 1-4, 2019 (as of January 30, 2019)



7. 週別推定感染地域(国内・外)別風しん報告数 2019年 第1~4週 (n=280)

Weekly rubella cases by acquired region, week 1-4, 2019 (based on diagnosed week as of January 30, 2019)

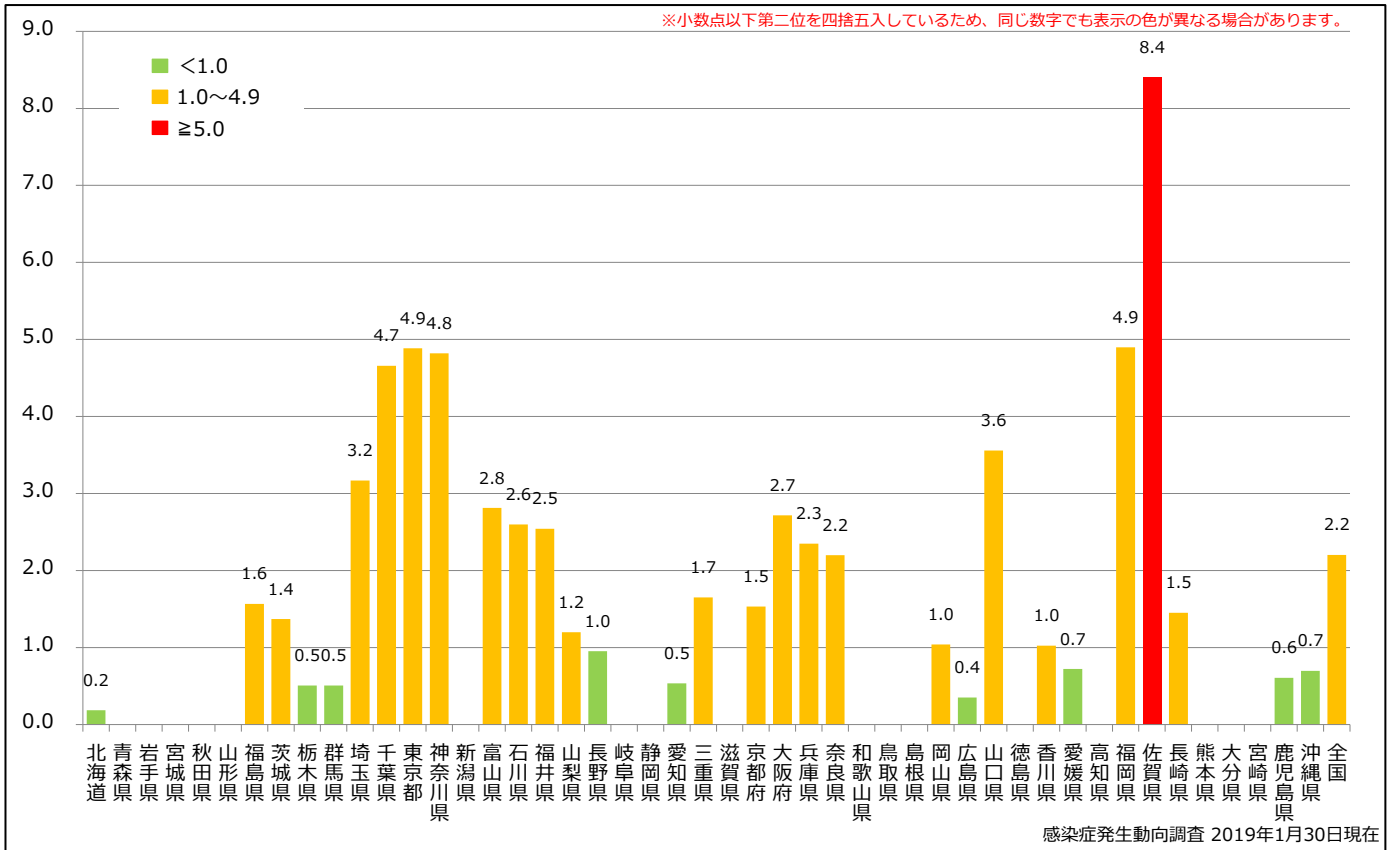
Domestic Imported Unspecified Unknown



8. 都道府県別人口百万人あたり風しん報告数 2019年 第1~4週 (n=280)

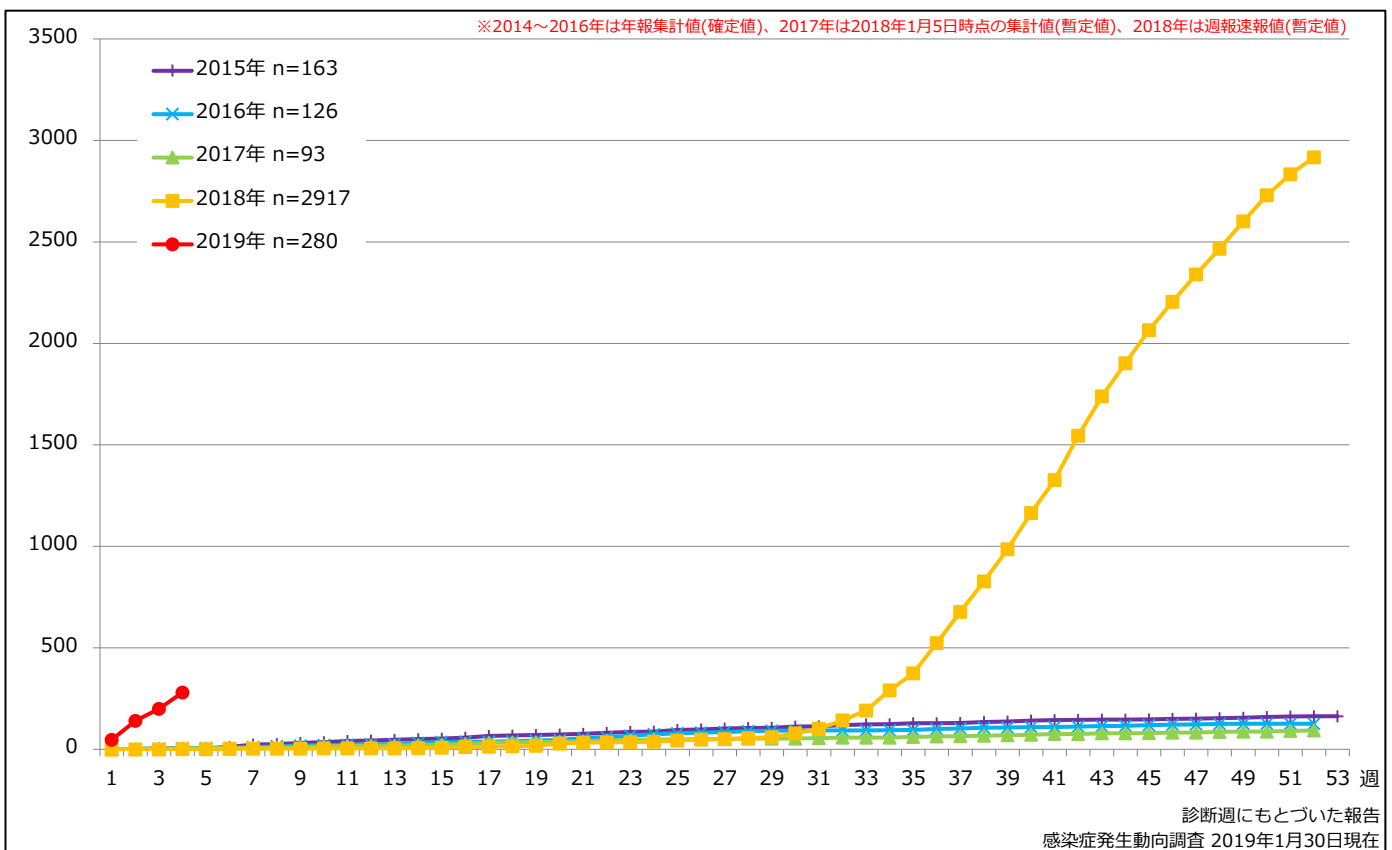
Reported rubella cases per 1 million population by prefecture, week 1-4, 2019 (as of January 30, 2019)

■ <1.0 ■ 1.0~4.9 ■ ≥5.0



追補. 風しん累積報告数の推移 2015~2019年 (第1~4週)

Cumulative rubella cases by week, 2015-2019 (week 1-4) (based on diagnosed week as of January 30, 2019)



9. 都道府県別風しん週別報告状況 2019年 第1~04週 感染症発生動向調査

2019年01月30日現在

Weekly rubella cases from week 01 to week 04, 2019 (based on diagnosed week as of January 30, 2019)

